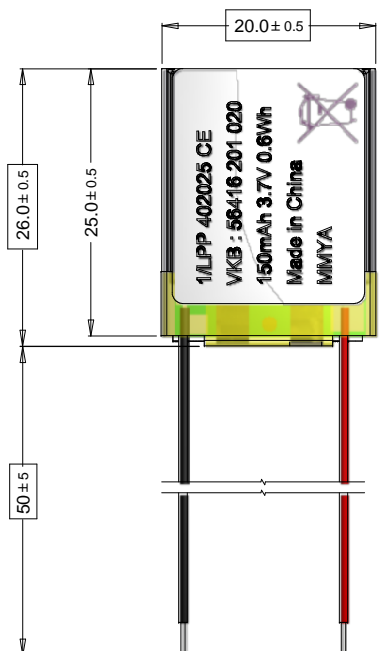
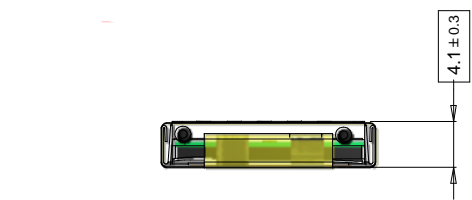


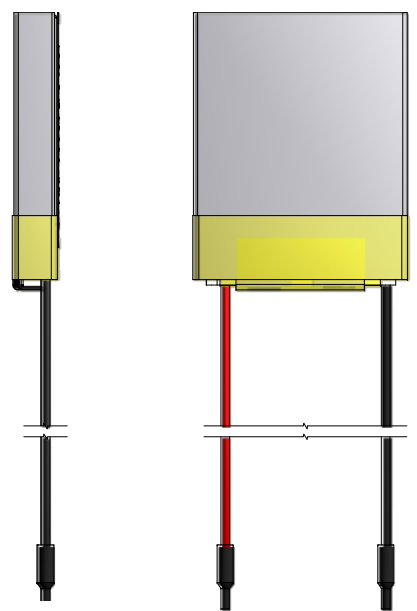
This is a controlled document.

Hardcopy to be endorsed by authorised person.

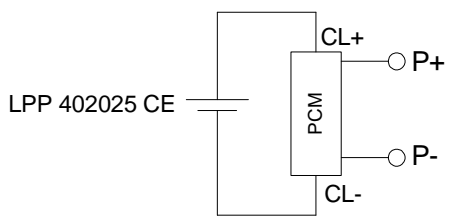
Check with Issuing Officer or SAP system for latest update.



View without sumitube



Circuit Diagram



Specification

1. General:

Battery with safety circuit and wires
 Cell: LPP 402025 CE
 PCM: RP1VDH00
 NTC : None
 ID:None
 Configuration: 1S
 Weight: appr. 3.8g

2. Electrical Specification:

Rated Capacity: 140mAh min, 150mAh typical
 Nominal Voltage: 3.7V
 Watt-hour rating : 0.6Wh
 Charging Method: Constant Current + Constant Voltage
 Max. Charge Voltage [V]: 4.2 (±50mV)
 Max. Continuous Charge Current: 140mA (limited by cell data sheet)
 Recommended Charge cut off: 2.8mA or timer 3h
 Max. Continuous Discharge Current: 280mA (limited by cell data sheet)
 Recommended Discharge cut off: 2.5V
 Internal Impedance: approx.270mΩ
 Exp. Cycle Life: 300 cycles> 80% of initial cap. (1C/1C)

Cell protection

Overcharge Detection: 4.275V ± 0.020V
 (0.5 to 2.0sec.delay, resume @ discharge current)
 Overdischarge Detection: 2.300V ± 0.035V
 (10 to 30msec.delay, resume @ charge current)
 Overcurrent Detection: 2A to 4A (5 to 20msec. delay @ charge & discharge)

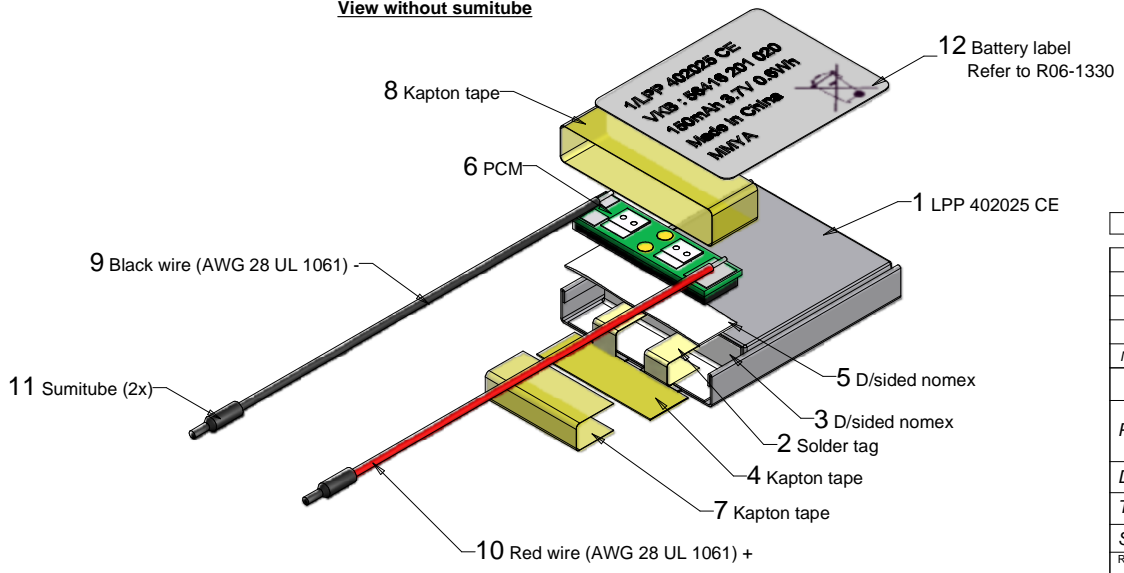
3. Ambient Conditions

Temperature Range
 -Charge: 0 to +45°C
 -Discharge: -20 to +60°C
 -Storage: 6 months at -20 to 45°C

-Humidity: 65 ± 20%RH

4. Environmental and Safety

Please follow VARTA Handling and Safety Precautions for Li-Ion & LiPolymer
 The cell is approved according UL 1642.
 This battery meets the requirement of Battery Directive, and the battery parts are RoHS Compliant.



These dimensions are considered inspectable

No	AO No	Revisions	Date	Name
2	V013/10	Change height of battery 4.1 ± 0.3 was 4.0 ± 0.3	2010-03-04	Erwin
1	V084/09	Change PCM used from RP0QK301 to RP1VDH00	2009-06-18	Erwin
0	L050/08	Refer to provisional drawing P26-10095 rev 000	2008-09-03	Erwin

Material: Refer to part list #700739		Description: 1/LPP 402025 CE PCM W with PCM and wires	
Projection:		Dimensions in mm	Prepared & Checked
Tolerance: As specified		2008-06-30	Erwin
Scale: 2 : 1		Verified & Approved	Dwg. No: 700739
			KVB Order No: 56416 201 020

Rights reserved to make technical changes, as a result of further development, without notice. This drawing is the property of VARTA Microbattery, and must not be copied or disclosed to a third party without the written consent of VARTA Microbattery.

